

WINTER FLOORCARE & EQUIPMENT

TIPS OF THE TRADE

Tip 1

ALWAYS KEEP YOUR UPRIGHT VACUUMS AWAY FROM THE WET
EVEN THOUGH THEY WILL PICK-UP MOISTURE AND HIDE IT, THE LIFE EXPECTANCY OF YOUR EQUIPMENT WILL DRAMATICALLY SHORTEN!

Tip 2

PRE-SWEEP LARGE DEBRIS OR QUANTITIES OF ROCK SALT, PAPER CLIPS, WOOD CHIPS, ETC. TO PREVENT DAMAGE TO VACUUMS.

Tip 3

ASSIGN/IDENTIFY ONE PARTICULAR VACUUM TO BE USED FOR WET PICK-UP ONLY.



Tip 4

STOP THE VACUUM JUST BEFORE HITTING THE WALLS. YOU WILL EXTEND THE LIFE OF THE VACUUM AND KEEP THE BUILDING LOOKING LIKE NEW. YOU WILL PROJECT A BETTER IMAGE OF "YOURSELF" AT THE SAME TIME.

Tip 5

CHECK THE CONDITION OF THE ELECTRICAL CORD AND THREE PRONG PLUG FOR SAFETY. ANY GUESSES WHERE THE ELECTRICITY WILL GO???

Tip 6

WHEN THE VACUUM IS RUN IN WET CONDITIONS, REPLACE THE FILTER, COLLECTOR BAG AND OPEN THE DOOR TO ALLOW IT TO AIR DRY.



Swish

Quality Cleaning Products *Since 1956*

Tip 7

RAISING THE VACUUM OFF THE FLOOR TO HELP DRY IT OUT WILL PREVENT RUSTING AND TRANSFERRING RUST ON THE CARPETING THROUGH OUT THE BUILDING.

Tip 8

NEVER NOSE-DIVE THE BEATER BAR OR BRUSH. PREMATURELY WEARS OUT BRUSHES, BELTS AND BEARINGS.

Tip 9

NOTIFY YOUR SUPERVISOR OF NEEDED REPAIRS OR PROBLEMS BEFORE THEY BECOME MORE SERIOUS AND COSTLY. PROBLEMS CAUGHT AT AN EARLY STAGE SIMPLY COST LESS.

Tip 10

SPOT GREASE MOVING PARTS MONTHLY. "A LITTLE DAB WILL DO YA"
ESPECIALLY FOR WET MOP BUCKETS & WRINGERS.



Tip 11

NEVER LEAVE THE MACHINE UNATTENDED. IT MAY GROW LEGS OR SOMEONE ELSE MAY DECIDE TO OPERATE IT WITH OUT THE BEST INTEREST IN HEALTH & SAFETY IN MIND.

Tip 12

ALWAYS RINSE OUT YOUR RECOVERY TANK ON BOTH AUTOMATIC SCRUBBERS AND WET VACUUMS. PREVENTS FOUL ODOURS, BACTERIA, RUST AND PREVENTABLE REPAIRS.

Tip 13

LEAVE THE LID OFF THE RECOVERY TANK OF AUTO SCRUBBERS AND WET VACS TO ALLOW AIR CIRCULATION

THINK
CARELESSNESS
IS DANGEROUS

Swish

Quality Cleaning Products *Since 1956*

Tip 14

REMOVE OR RAISE THE FLOOR PADS OFF THE FLOOR PREVENTING PAD FLATTENING, PAD HOLDER WARPAGE AND PREMATURE WEAR OF YOUR FLOOR PADS. RINSE FLOORPADS OUT AND HANG TO DRY AFTER EACH USE.

Tip 15

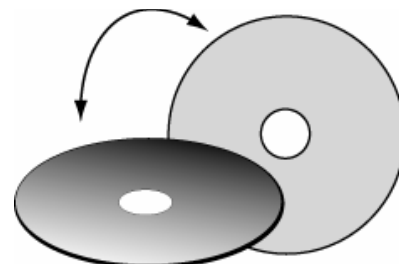
SQUEEGEES ON AUTOMATIC FLOOR SCRUBBERS SHOULD BE RAISED OFF THE FLOOR TO PREVENT CURLING OF RUBBERS AND STREAKING.

Tip 16

REPORT ALL PROBLEMS OR CONCERNS WITH EQUIPMENT

Tip 17

STATISTICS PROVE THAT PREVENTATIVE MAINTENANCE PROGRAMS REDUCE REPAIR COSTS DRAMATICALLY



Tip 18

USE SWISH WINTERINSE OR ENVIRO SOLUTIONS HAZE AWAY TO ELIMINATE THE WHITE WINTER RESIDUE LEFT ON YOUR SHINY FLOORS WHEN CLEANING WITH REGULAR NEUTRAL CLEANERS. SAVES LABOUR BY ELIMINATING THAT FILM THE FIRST TIME. USE IN AUTO SCRUBBERS AND WET MOP BUCKETS IN PLACE OF NEUTRAL CLEANERS. THE MAJOR BONUS HERE IS PROLONGED FLOOR FINISH LIFE. NO DULLING OF FINISH.

Tip 19

ADD THE ABOVE PRODUCTS TO YOUR CARPET EXTRACTOR TO ELIMINATE THAT WHITE RESIDUE FROM YOUR ENTRANCE MATTING AND HALLWAY RUNNERS. USE AS DIRECTED.

Tip 20

CHANGE YOUR FLOOR CLEANING SOLUTION MORE OFTEN TO PROVIDE A BETTER END RESULT. CLEANERS ONLY GO SO FAR WHEN SUBJECTED TO HARSH WINTER CONDITIONS.



Swish

Quality Cleaning Products Since 1956

Tip 21

CHANGE YOUR CLEANING SCHEDULE TO WET MOP MORE ON THOSE HARSH WINTER DAYS. YOU WILL BE AMAZED HOW BENEFICIAL ONE MORE WET MOP WILL BE!

Tip 22

KEEP YOUR CLEANING SOLUTION AT THE SAME DILUTION DURING THE WINTER MONTHS. MORE IS NOT BETTER! YOU WILL LEAVE WHITE FILMS, BITE INTO YOUR FLOOR FINISH AND DULL THE SURFACE

Tip 23

HOT WATER DRIES FASTER. ELIMINATES SLIP & FALL INCIDENTS WHEN SHORT OF TIME.

Tip 24

ROTATE YOUR STOCK OF LIQUID PRODUCTS IN THE STORAGE CLOSETS. USUALLY PRODUCT IS GOOD FOR 2-3 YEARS. KEEP THE CAPS ON AT ALL TIMES AND CONTAINERS AWAY FROM BOILERS, FURNACES, ETC.



Tip 25

ALWAYS COMPLETE A LIGHT SCRUB & RECOAT BEFORE WINTER SETS IN. THE LITTLE TIME IT TAKES NOW WILL PAY-OFF AND SAVE YOU INTENSIVE LABOUR FROM HAVING TO **DEEP STRIP** IN THE SPRING TIME. YOU NEED A PROTECTIVE BASE OF EITHER SEALER OR FINISH TO GET YOU THROUGH THE WINTER MONTHS. YOU WOULD BE SURPRISED HOW AN EXTRA COAT OR TWO OF FINISH WILL ELIMINATE STAINING AND PROLONG THE LIFE OF YOUR FLOORS. LET THE FINISH TAKE THE ABUSE, NOT YOU.



Tip 26

ALWAYS USE WET FLOOR SIGNS FOR YOURSELF, YOUR CUSTOMERS AND VISITORS TO YOUR FACILITY. WE RECOMMEND YOU USE MORE THEN ONE!

Swish

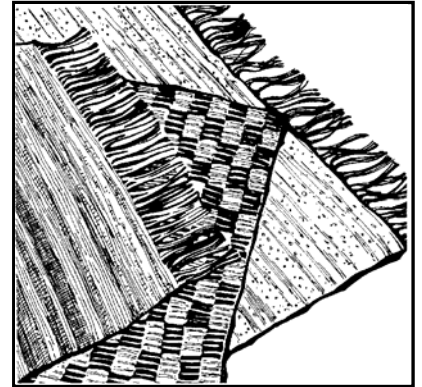
Quality Cleaning Products *Since 1956*

Tip 27

USE AN EXTRA PIECE OF NEW OR OLD ENTRANCE MATTING DURING THOSE BAD WINTER STORMS. IT MAY NOT BE A MATCHING COLOUR BUT IT WILL WORK AND SAVE YOU WET MOPPING LABOUR AND DAMAGE TO FLOORS.

Tip 28

LIFT UP THE MATS PERIODICALLY AND WET MOP ANY MOISTURE FROM UNDERNEATH THE MATTING. ALLOWS DRYING TIME AND PREVENTS MOULD FROM GROWING CAUSING FOUL ODOURS. NEVER LEAVE AN ENTRANCE WAY WITH OUT MATTING DOWN.



Tip 29

WET VACUUM ENTRANCE MATTING THROUGH OUT THE WORK DAY. NOBODY LIKE'S STEPPING ON A MAT THAT IS LIKE A POOL OF WATER. YOU KNOW, *SQUISH SQUISH*. THIS WILL PREVENT SLIP & FALL ACCIDENTS, UNECESSARY TRACKING OF WATER, SAND AND SALT IN YOUR BUILDING PLUS REDUCE FOUL ODOURS FROM GREETING YOUR VISITORS.



Tip 30

A FLOOR SQUEEGEE WORKS GREAT FOR REMOVING EXCESSIVE WATER FROM ENTRANCE MATTING TOO.

Tip 31

AFTER EXTRACTING CARPETS, WET VACUUM THEM TWICE.

Tip 32

TO EXTEND THE LIFE OF YOUR WET MOPS, ALWAYS RINSE, WRING THEM OUT AND HANG TO DRY. THIS WILL PREVENT FOUL ODOURS FROM SPREADING THROUGH OUT YOUR FACILITY.



Quality Cleaning Products Since 1956

Tip 33

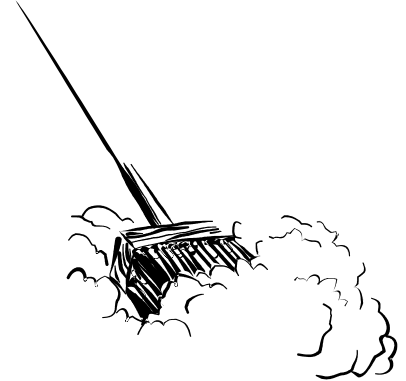
EMPTY YOUR WET MOP BUCKETS AND RINSE OUT WITH CLEAR WATER OR A DISINFECTANT SOLUTION. THIS WILL ELIMINATE FOUL ODOURS AND BACTERIA.

Tip 34

DUST MOP AS OFTEN AS POSSIBLE. REDUCING WINTER GRIT AND SALT FROM ENTERING DEEP INTO YOUR BUILDING. THIS WILL SAVE LABOUR, ADDITIONAL SUPPLIES AND PROVIDE A BETTER LOOKING BUILDING OVERALL.

Tip 35

ALWAYS HANG YOUR DUST MOPS UP TO DRY. A FANCY HOLDER OR A NAIL WILL WORK FINE. JUST GET THEM OFF THE FLOOR.



Tip 36

NEVER USE TOO MUCH OIL BASED DUST MOP TREATMENT. NEVER IMMEDIATELY TREAT & USE ON THE FLOOR OR APPLYING TOO MUCH TREATMENT WILL CAUSE SLIP & FALL ACCIDENTS. ALLOW TREATMENT TO DRY OVERNIGHT BEFORE USING DRY MOP.

Tip 37

WHISK, VACUUM OR SHAKE OUT YOUR DRY MOPS AS OFTEN AS POSSIBLE.

Tip 38

SHOVEL AS MUCH SNOW AND CLEAR AS MUCH ICE FROM THE ENTRANCES OF YOUR BUILDING. "AN OUNCE OF PREVENTION GOES A LONG WAY"

Swish

Quality Cleaning Products *Since 1956*

THINK ABOUT IT!